



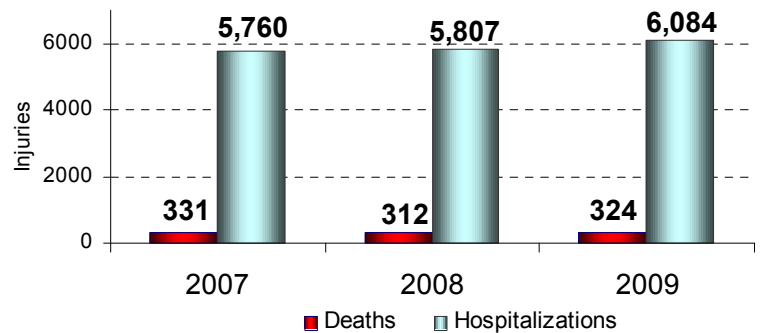
July 2011

Injury Deaths and Hospitalizations, 2007-2009 Residents of Miami-Dade County Aged 65+ Yrs.

This fact sheet describes injuries that resulted in either death or hospitalization during the years 2007-2009 to residents of Miami-Dade County aged 65 and older. Injury was responsible for 967 deaths and 17,651 hospitalizations during this 3-year period, which equates to 18 injury hospitalizations for every death.

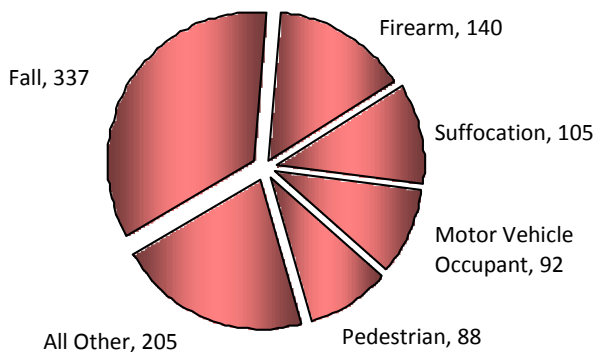
- Unintentional injury was responsible for 76% of deaths and 96% of hospitalizations. The unintentional death rate was unchanged but unintentional hospitalizations increased over these 3 years, primarily due to an increase in falls.
- Homicides accounted for 34 (4%) of injury deaths and assault was responsible for 104 injury hospitalizations (1%).
- There were 167 suicides over this period (20% of deaths) and 227 self-inflicted injury hospitalizations (1%). Suicide and self-inflicted injury hospitalizations both decreased over the 3 years.

**Injury Deaths & Hospitalizations, 2007-2009
Miami-Dade Co. Residents Aged 65+**



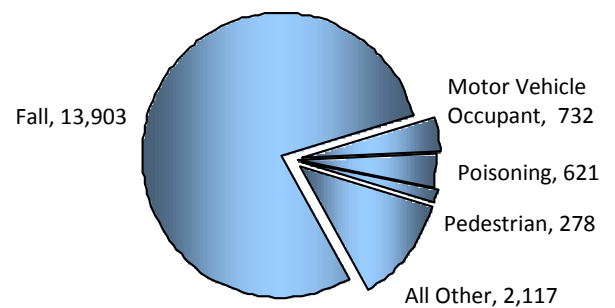
What Caused Deaths From Injury, 2007-2009?

- Falls (35%) were the leading cause of injury death during this 3-year period.
- 121 of the 140 firearm deaths were suicides and 17 were homicides.
- 60 of the 105 suffocation deaths resulted from unintentional obstructed airway incidents such as choking while 39 involved suicides due to hanging.



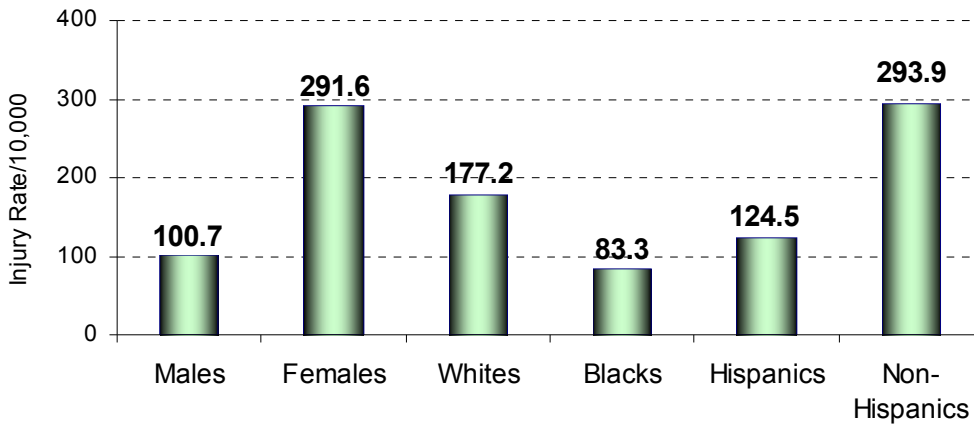
What Caused Hospitalizations From Injury, 2007-2009?

- Falls were responsible for 79% of injury hospitalizations followed by motor vehicle crashes (4%) and poisonings (4%).
- One-third of hospitalized falls resulted in a hip fracture; another 11% involved TBI.
- Pedestrian hospitalizations decreased 48% from a high of 121 in 2007 to 66 in 2009.
- Falls increased and poisoning and vehicular injuries were unchanged over this period.



Which Groups of Elder Residents Were at Greatest Risk for Injury in 2007-2009?

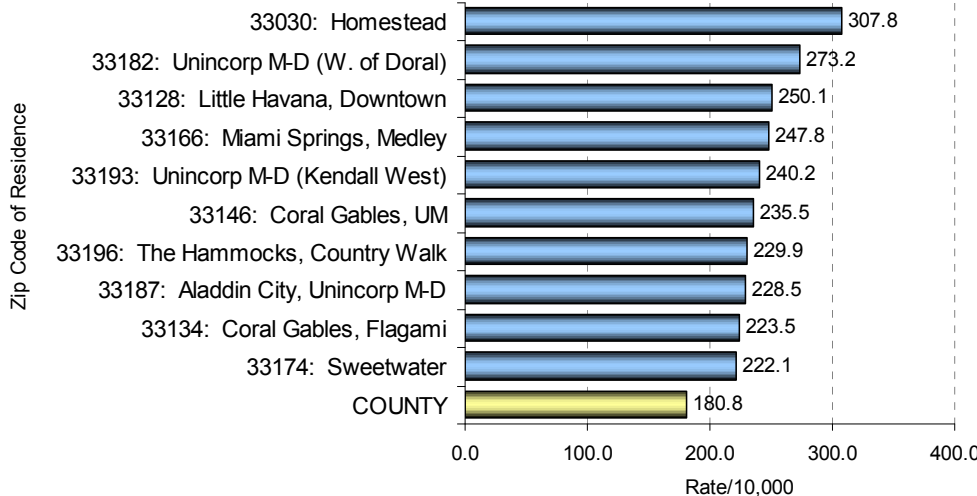
This graph shows the rates for injuries that resulted in death or hospitalization for six groups of Miami-Dade County residents aged 65+.



- Females had an injury rate nearly 3-times higher than males. The injury rate for males increased 4% while the female injury rate did not change over this 3-year period.
- Whites had an injury rate that was twice the rate for black elder residents.
- Elder non-Hispanic had an injury rate more than twice the rate of elder Hispanics.

Which Zip Codes in the County Were at Greatest Risk for Serious Injury to Persons Age 65+?

**Injury Deaths & Hospitalizations to Residents Aged 65+
3 Yr. Avg. Injury Rate by Zip Code of Residence
Miami-Dade Co., FL 2007-2009**



- This graph shows the zip codes with the 10 highest fatal and hospitalized injury rates to residents age 65 and older.
- Four zip codes (33182, 33193, 33196, 33187) were located on the western edge of the county bordering the Everglades.
- Two zip codes (33134, 33146) represented Coral Gables and the Flagami community in the City of Miami.

Rates not calculated for zip codes that averaged fewer than 5 injuries/year over the 3-year period

Produced by the Miami-Dade County Injury Surveillance System

Data Sources: Death Certificates, Office of Vital Statistics, FL Dept. of Health
 Medical Examiner Records, Miami County Medical Examiner Dept.
 Hospital Discharge Data, Agency for Health Care Administration
 PHONE (IFCK): 305-804-7212 (MDCHD): 305-470-5649
 E-MAIL: stephen.dearwater@jhs-miami.org
 WEBSITE: <http://dadehealth.org/injury/INJURYintro.asp>

